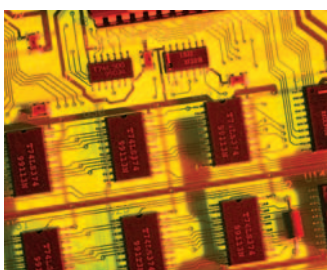


# ASBIS moves to customised precision

With 15,000+ product items in its portfolio, ASBIS is one of the largest computer component suppliers in Europe, the Middle East and Africa (EMEA). In line with a customised installation of Exact accounting and logistical software, the fast expanding firm is all set to enjoy exceptional integration.



ASBIS is the largest and fastest growing EMEA region distributor of Intel, Seagate, Hitachi Global Storage Technologies, Samsung, Prestigio and Canyon products. It serves



more than 12,500 active customers in 70 countries via 4 distribution centres and 33 local warehouses. Many of its over 600 employees are also devoted to a unique pre- and post-sales service.

[www.asbis.com](http://www.asbis.com)

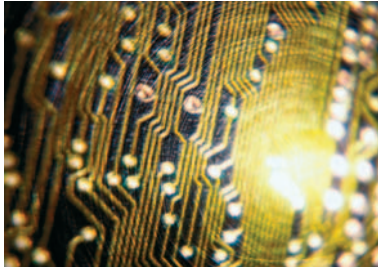
ASBIS Enterprises Ltd distinguishes itself among customers by running fully rolled out B2B services that meet demand with precision. With regard to the company's internal IT requirements, the management and staff expect no less. When it came to replacing the company's dated Enterprise Resource Planning (ERP) system for accounting and logistics with new generation Exact products, ASBIS was quick to stress that it needed a customised solution.

The foundation for the provision of a total ERP solution was the innovative, fast and user-friendly Exact Globe 2003 Enterprise. Offering easy, pleasurable traditional bookkeeping with the simple maintenance of general ledgers, along with the clear-cut generation of up-to-date financial reports, Globe 2003's most talked about feature is its One-X architecture. Once deemed unimaginable in the IT world, One-X capitalises on radically increased computer storage capacities to allow firms to run their financial administration through just one database and a sole transaction table.

"One-X is an extraordinary breakthrough," remarked ASBIS IT Manager Alexandre Zavadski. "I can't see how we ever operated without it. The accounts managers tell me we're also saving time and money thanks to quick and simple insights into reconciled entries, simply presented balance sheets and the multi-functional general ledger card."

*"One-X is an extraordinary breakthrough. The account managers tell me we're also saving time and money thanks to quick and simple insights into reconciled entries, simply presented balance sheets and the multi-functional general ledger card."*

**Alexandre Zavadski, ASBIS IT Manager**



The customised project was applied to ASBIS offices in 12 countries across Europe, the Russian Federation and South Africa. The most important company-specific need that had to be addressed was the provision of a functionality enabling receipts to be imported through the Exact system in conjunction with ASBIS's use of its own web-based application together with Exact logistical XML server functions.

"In meeting the objective, we've achieved import that results in transparent financial entries for the stock and 'easy zoom' processing of the purchasing lines," said Exact leading salesperson Joost Oevelen. "The margin for error has been minimised with fully automated processes between the web-based application and Globe 2003. This customised design completed the full integration of the company's logistical side."

---

## ASBIS INTEGRATION SUMMARY



### CHALLENGE

Customised installation of total ERP solution, Exact Globe 2003 Enterprise, with tailored options including a facility for importing receipts through Exact in tandem with ASBIS's use of its own web-based application.

### SOLUTION

Exact Globe 2003 Enterprise with its One-X architecture channelling all financial administration through a single database and just one transaction table.

### BENEFITS

Simple, enjoyable traditional bookkeeping, easy upkeep of general ledgers, straightforward generation of time-sensitive financial reports and high-flexibility integrated logistics options.

© 2005 Exact International B.V. All rights reserved. This text is for information only and without liability. Products are subject to change and country-specific differences have to be taken into account.